



# Tittabawassee Township Recreation Plan

# 2018- 2022

This plan is to be a guide for any new development in the park areas and recreational facilities in Tittabawassee Township.



Enhancing Quality of Life  
Planning for Our Future  
Creating Great Recreation  
Opportunities



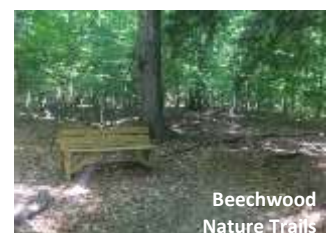
Memorial  
Park



Festival  
Park



Tittabawassee  
Township Park



Beechwood  
Nature Trails

# Table of Contents

<b>Introduction</b>	<b>2</b>
<b>Community Profile</b>	<b>3</b>
Population Statistics	3
Physical Features	4
Transportation Systems	4
<b>Administrative Structure</b>	<b>5</b>
Current Funding Sources	6
Role of Volunteers	7
Relationships with Local Organizations	7
Articles of Incorporation	7
<b>Parks and Recreation Areas Map</b>	<b>8</b>
<b>Recreation Inventory</b>	<b>9</b>
Festival Park	10
Memorial Park	11
Beechwood Nature Trails	12
Tittabawassee Township Park	13
Village Park	15
Freeland SportsZone	16
Freeland Pathway	17
<b>The Planning Process</b>	<b>18</b>
<b>Public Input</b>	<b>19</b>
<b>Summary of Projects and Objectives</b>	<b>23</b>
<b>Pathway System Plan Detail</b>	<b>27</b>
<b>Appendix A Public Input Process</b>	<b>30</b>
<b>Appendix B Post-Completion Self-Certification</b>	

## Tittabawassee Township Board of Trustees

---

Rick Hayes, *Supervisor*  
 Tracy Reimus, *Treasurer*  
 Robert DuCharme, *Clerk*  
 Wayne King, *Trustee*  
 Carl Neuenfeldt, *Trustee*  
 Paul Vasold, *Trustee*  
 Tom Metiva, *Trustee*

## Tittabawassee Township Park Committee

---

Wayne King, *Chairperson*  
 Donald Hemgesberg, *Secretary*  
 Matthew Rappley  
 Karl Primdahl  
 Linda Sanborn  
 Mike Schoen  
 Zachary Birnbaum

## Additional Support

---

Grant R. Murschel, *Planner*  
 Brandy Kauska, *Deputy Clerk*  
 Allison Riffel, *Manager Assistant*

## INTRODUCTION

This document is the product of a widespread effort involving community engagement and committee brainstorming aimed at outlining the future of park and recreation facilities in Tittabawassee Township. The balanced vision set forth between large scale improvements, small projects, and policy objectives is to be used as a reference tool to guide any development in the parks and recreation areas of the Township.

It is important to note that the 2018 Tittabawassee Township Recreation Plan is a document of vision to guide development. It is not a fixed blueprint and does not have the force of law.

Ultimately, the 2018 Recreation Plan provides a set of implementation strategies to guide the improvements which have been identified as a priority by both Township residents and the Tittabawassee Township Park Committee. These strategies are outlined to show the necessary steps the Township must take in order to accomplish the identified goals, projects, and objectives.

In addition, it is important to note that this plan has been compiled following a format outlined by the Michigan Department of Natural Resources (DNR).



## 2018 Recreation Plan



# COMMUNITY PROFILE

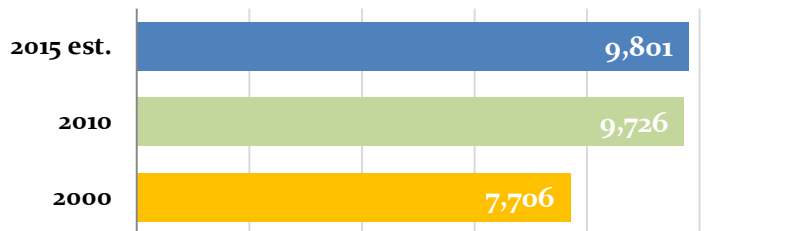
Tittabawassee Township is located in East Central Michigan in an area known as the Great Lakes Bay Region. It is located in the northwest corner of Saginaw County, 8 miles northwest of Saginaw, 4 miles southeast of Midland and 12 miles southwest of Bay City. This location places it in a geographically central location among the region’s cities. Tittabawassee Township is also part of the U.S. Census designated Combined Statistical Area (CSA) of Saginaw-Bay City-Saginaw Township North, MI. As of the 2010 Census, this CSA had a total population of 307,940.

According to the U.S. Census Bureau, Tittabawassee Township’s population increased a total of 27.2 percent between 2000 and 2015, from 7,706 in 2000 to 9,801 in 2015 estimates. In reference, Saginaw County’s population decreased from 210,039 in 2000 to 200,169 in 2015 est. The median age of people in Tittabawassee Township also decreased from 35.1 in 2000 to 35 in 2015 est.

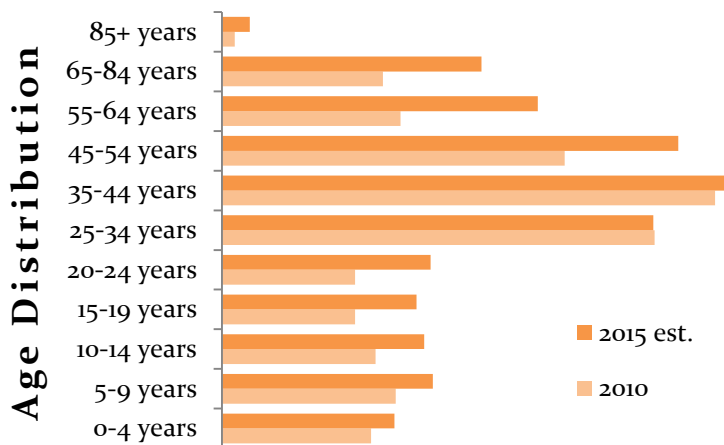
The Township is home to the predominantly residential community of Freeland. MBS International Airport, the Saginaw Regional Correctional Facility, the Lake State Railway, and a variety of regional commercial businesses also call the Township home. One school district, the Freeland Community School District services, the entire Township.

## Population Statistics

### Total Population



Source: U.S. Census Bureau. Profile of General Population and Housing Characteristic: 2010, 2000. ACS Demographic and Housing Estimates: 2015 estimates.



Source: U.S. Census Bureau. Profile of General Population and Housing Characteristic: 2010, 2000. ACS Demographic and Housing Estimates: 2015 estimates.



## Physical Features

### *TOPOGRAPHY AND DRAINAGE*

Tittabawassee Township is relatively flat, with elevations ranging from 590 feet to 673 feet above sea level. The main water feature is the Tittabawassee River. The water quality of this river is occasionally affected by conditions such as dissolved solids, high turbidity and nutrient enrichment. The Tittabawassee River’s value to the community is mostly aesthetic; however, walleye fishing is very popular. During peak walleye fishing times, many boats can be seen in the Tittabawassee River. The 100-year flood plain is an area around the river where the water levels can rise and flood the area. The probability of this happening in any given year is 1 in 100. This is a limitation to development along the river, and occupies 1,056 acres of land adjacent to the river. Only development of open space conservation, recreation, or other non-human inhabitation and low impact use can occur within the floodplain.

### *VEGETATION AND WILDLIFE*

There are woodlands scattered around the many sections of the Township, with most concentrated in the northwest corner. The areas can be found near streams, wetlands, and the Tittabawassee River. These areas also provide suitable refuge for many game animals, including white tailed deer, raccoon, woodchuck, waterfowl, and pheasant. There are many types of trees and shrubs which grow in these woodlands. In many locations the vegetation can grow so thick it can become impassible on foot.



## Transportation Systems

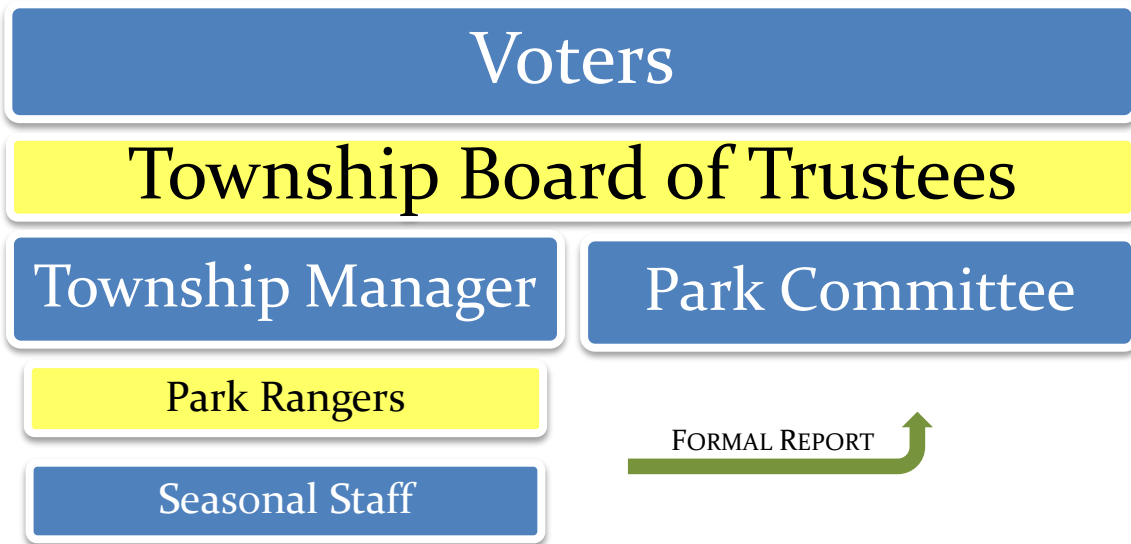
### *ROADS AND HIGHWAYS*

Michigan Highway 47 (M-47) is the primary north-south route through the township and links Midland with Saginaw. This highway is a full access five-lane road throughout most of the Township, but changes to a four-lane limited access divided highway in the northwest portion of the Township. Daily bidirectional traffic counts on M-47 are 19,719 north of Tittabawassee road. M-47 is the only principal arterial in the Township. The remaining roads in the Township are county primary and local roads that are maintained by the Saginaw County Road Commission.

### *CONNECTING TO THE TOWNSHIP RECREATION FACILITIES*

Tittabawassee Township Park is located on Midland Road just northwest of the intersection of M-47 and Midland Road. Festival Park is located on Freeland Road just west of the Freeland Road Bridge and on the Tittabawassee River. Village Park is located on Washington Street (Freeland Road) next to the Freeland Post Office. Beechwood Nature Trails is located on Northway Parkway west of N. River Road. Memorial Park is located off S. Main Street (M-47) just a block south of the intersection with Freeland Road. The Freeland SportsZone is located on M-47 just south of Kochville Road. The Freeland Pathway is located on the east side of M-47 and runs for 2.5 miles starting at the Freeland SportsZone.

## ADMINISTRATIVE STRUCTURE



The voters hold the most authority in any democratic government. The voters directly elect the seven members of the Tittabawassee Township Board of Trustees which includes the Supervisor, Treasurer, Clerk, and four Trustees. The Board of Trustees or Township Board then appoints a Township Manager and members to the Park Committee.

### *PARK COMMITTEE*

The Tittabawassee Township Park Committee consists of seven members including a chairperson, secretary, and five members at large. Terms of office are four years.

The duties of the Tittabawassee Township Park Committee are to acquire, plan, develop, maintain, operate and administer public playgrounds, athletic fields, parks, swimming pools and beaches, camps, indoor recreation centers, winter sports areas, and other recreation facilities and activities on any of the properties owned or controlled by Tittabawassee Township.

Monthly business of the Park Committee consists of recommendations to the Township Board on a variety of topics including charges to collect reasonable fees for the use of facilities, privileges and conveniences provided.

The Park Committee shall submit for approval by the Township Board a budget required to administer the park and recreation system. The committee may also solicit and receive any gifts, bequests, contributions, appropriations, federal, state or private grants and their real and personal property.

### *PARK RANGERS AND SEASONAL STAFF*

The Park Rangers oversee daily operation of the Township’s recreation facilities, manages the Seasonal Rangers, and carries out maintenance of the facilities. The position is hired by the Township Administration i.e. the Township Manager. The Park Rangers formally report to the Park Committee on a monthly basis.

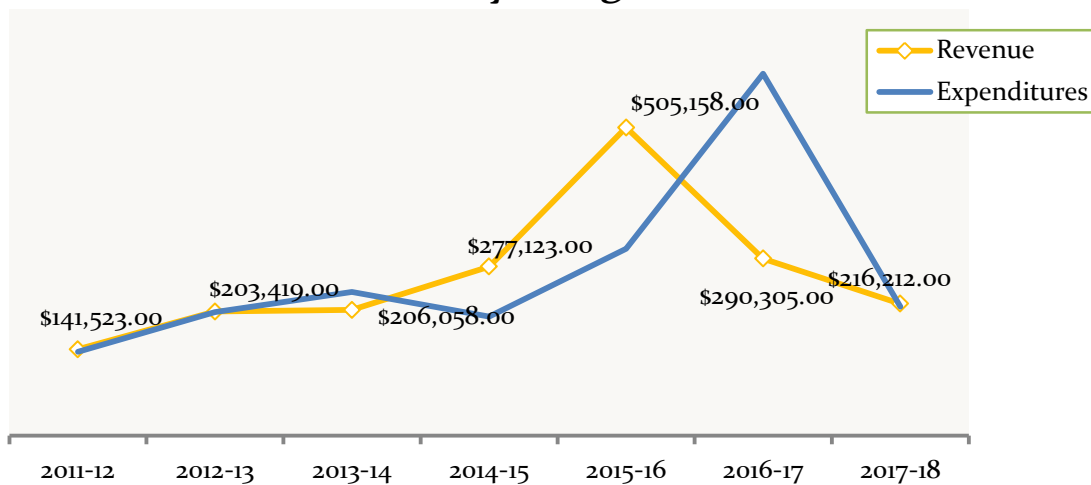
The Seasonal Rangers assist the Park Rangers in carrying out maintenance and the numerous projects that arise. The number of Seasonal Rangers is determined by the Township Board but the ultimate hiring is determined by the Park Rangers.

## Current Funding Sources

Revenues	Budget	
	2012-2013	2017-2018
Bandshell Programs	\$100	\$500
Interest earnings	10	-
Cellular tower leases	6,250	14,700
Tittabawassee Park rentals	4,500	4,000
Memorial Park rentals	13,500	17,000
Donations	6,000	
Reimbursements	100	-
Miscellaneous	100	-
Park Operations (General Budget)	100,000	180,000
<b>TOTAL</b>	<b>\$130,560</b>	<b>\$216,200</b>

The largest revenue source for the Park Fund Budget is the operational transfer from the Township's General Fund. In addition, the Park Fund generates revenue from rentals, lease agreements, and donations.

## Yearly Budget



### REVENUE & EXPENDITURES

From the period of FY 2014-15 thru 2016-17 the Park Fund received several outside sources of revenue for the following capital projects.

Memorial Park – Acquisition of additional Property	\$97,000
Freeland Pathway Construction	\$240,000
Freeland Pathway Pavilion	\$60,000
Tittabawassee Park Entrance & Sign	\$55,000
Tittabawassee Park Christmas Lights	\$20,000

## Role of Volunteers

Throughout any given year volunteers donate many hours to clean-up projects in the Township's recreation facilities. These efforts are organized through the Park Rangers.

## Relationships with Local Organizations

Tittabawassee Township's organizations play a key role in volunteer clean up and funding of the park system. The local Woman's Study Club focuses on routine clean-up in Village Park. In the Tittabawassee Township Park, many Eagle Scouts have conducted projects including bridges on trails and benches. The Freeland Lions Club was a big advocate in creating the band shell and starting the free summer concert series. They were also involved in the construction of Tittabawassee Township Park's Disc Golf course. The Boy Scouts of America chapter has volunteered their time in park clean up and maintenance as well.

---

## Articles of Incorporation

Tittabawassee Township AR 01-84

(2) **PARK COMMITTEE** is established pursuant to Act 156, of the Public Acts of 1917 as amended by being an act authorizing a township to operate a system of public recreation and playgrounds; acquire equipment and maintain land, buildings and/or other recreation facilities and to take other actions in furtherance of these endeavors. The Committee shall make recommendations to the Township Board with regard to operation, maintenance and construction within existing Township Parks, and as the need arises, to recommend the development of new Township Parks.

Adopted: February 14, 1984

Revised: January 8, 1985

Revised: December 9, 1986

Revised: January 12, 1988

Revised: October 11, 1988

Revised: February 24, 2004



# TITTABAWASSEE TOWNSHIP Parks and Recreation Areas











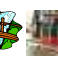






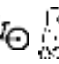


July 28, 2017  
Recreation Plan 2018  
Allison Riffel

# RECREATION INVENTORY

The following table is a list of parks and recreational facilities and the recreation activities they provide in Tittabawassee Township and the surrounding region. The inventory was conducted through site visitation, aerial photograph review and website referencing.

**LEGEND:**

																		
Ball diamonds	Basketball courts	Football/soccer	Tennis courts	Volleyball Courts	Picnic area/Pavilion	Playground equipment	Open Space/Congregating Area	Nature trails	Riverfront property	Shelter	Water access/fishing	Restrooms	Concessions	Disc Golf	Bandshell	Bike Path	Rollerblade	Walk/Run Pathways

Township Parks	
Festival Park	
Memorial Park	
Beechwood Nature Trails	
Tittabawassee Township Park	
Village Park	
Freeland Pathway	
Local Commercial Recreation	
Freeland SportsZone	
Busch Machine & Marine Boat Launch	
Freeland Community Schools	
Freeland Elementary	
The Learning Center	
Freeland Middle/High School	

# Festival Park

Area: 30 acres

**Notable Features:**

- >Only public dock on the Tittabawassee River in the Township
- >Kayak & Canoe Launch
- >Handicap Accessible
- >Fishing Access
- >3 Pavilions

ADA Design Standards

Ranking: 4



**Public Grant History and Status:**

Site has not received any grant assistance and therefore does not have any grant history.





# Memorial Park

Area: 2 acres

**Notable Features:**

- >The Memorial Park Building is available to rent
- >Pedestrian covered bridge
- >River overlook pier
- >Historical Marker
- >Playground and pavilion
- >Gazebo

ADA Design Standards

Ranking: 3



**Public Grant History and Status:**

- ① Project No. CM99-053, Memorial Park Walkout Pier  
Project Year: 1999  
Project Status: Closed  
Grant Amount: \$22,688.00



### Beechwood Nature Trails

Area: 8 acres

**Notable Features:**

- >Walking trails through a naturally forested area
- >Tree species posted throughout walk

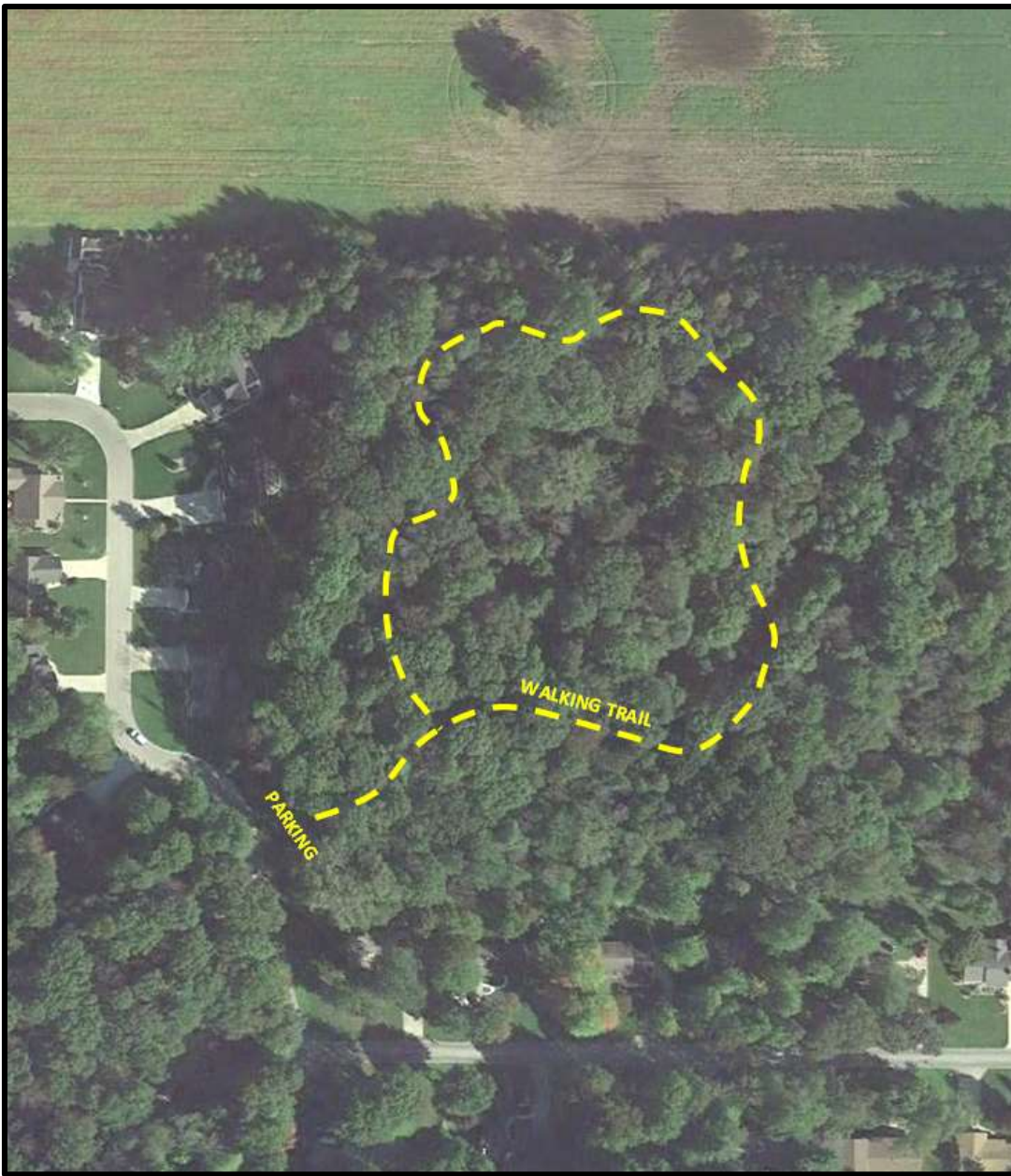
ADA Design Standards

Ranking: 1



**Public Grant History and Status:**

Site has not received any grant assistance and therefore does not have any grant history.





# Tittabawassee Township Park

Area: 80 acres

**Notable Features:**

- >Annual “Concerts in the Park” series and “Arts in the Park”
- >Free summer recreation program
- >24 Hole Disc Golf Course (year round)
- >Sand volleyball courts
- >Pavilions (available for rent)
- >Sled hill
- >Regulation size horseshoe courts
- >Ball diamonds
- >Basketball court
- >2.5 miles of walking trails
- >Fishing access
- >Annual children’s fishing event
- >Annual Freeland Lights light show

ADA Design Standards  
 Ranking: 3



Photo 1



Photo 2

- 1 - The band shell for the annual “Concerts in the Park”
- 2- One of two softball fields at the Township Park
- 3- A snapshot of Freeland Lights
- 4- A hole on the disc golf course
- 5- Pavilion for parties/gatherings



Photo 3



Photo 4



Photo 5

**Grant History and Status:**

- ① Project No. 26-01060 C1, *Tittabawassee Township Park*  
 Project Year: 1978  
 Project Status: Closed  
 Grant Amount: \$13,346.72
- ② Project No. 26-01175, *Tittabawassee Twp Comm Park*  
 Project Year: 1981  
 Project Status: Closed  
 Grant Amount: \$31,329.00
- ③ Project No. 26-01276, *Tittabawassee Township Park*  
 Project Year: 1983  
 Project Status: Closed  
 Grant Amount: \$12,744.97

# Tittabawassee Township Park



Twenty more acres of property is owned by the Township south of the red arrow.



## Village Park

Area: 0.2 acres

### Notable Features:

- >Urban plaza-style park with planters for flowers and trees
- >Benches adjacent to local post office
- >Memorial Bricks

ADA Design Standards Ranking: 4



### Public Grant History and Status:

Site has not received any grant assistance and therefore does not have any grant history.



# Freeland SportsZone

Area: 17 acres

**Notable Features:**

- >Fitness and Recreation
- >Illuminated tennis courts
- >StrikeZone baseball fields
- >Membership and Pay-per-use:  
 Fitness Classes, Walking Track,  
 Hardwood Courts, Weight and  
 Aerobic Machines, Turf Areas
- >Empey Learning Zone
- >Freeland Pathway Trailhead
- >Playground
- >Pavilion
- >Outdoor Handicap Accessible  
 Restroom

ADA Design Standards  
 Ranking: 3



**Public Grant History and Status:**

Site has not received any grant assistance and therefore does not have any grant history.



# Freeland Pathway

**Length:** 2.5 miles

**Notable Features:**

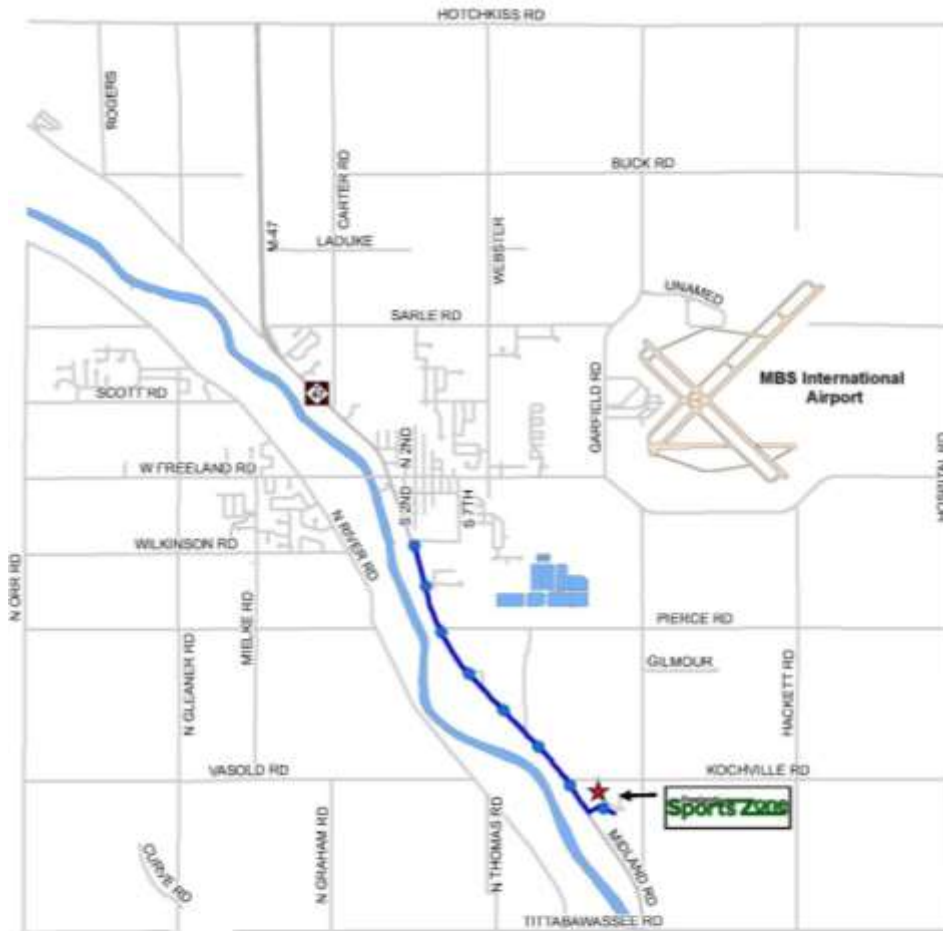
- >10 ft. wide asphalt path
- >Traverses 4 natural water courses
- >Connects village with Freeland SportsZone
- >Handicap Accessible
- >Pavilion
- >Playground
- >All non-motorized uses

**ADA Design Standards Ranking: 4**



**Public Grant History and Status:**

- ① MDOT Transportation Alternative. Grant No. 2014013  
*M-47 Nonmotorized Path*  
 Grant Year: 2015  
 Project Status: Closed  
 Grant Amount: \$1,390,200.00



**Legend**

Freeland Pathway





## THE PLANNING PROCESS

The Recreation Plan's purpose is to direct the community's development of recreation resources. The plan is the product of a widespread effort involving community input, committee brainstorming, and Township Office staff preparation. The plan is representation of the consensus of a broad spectrum of the community. The process of completing the document was over an extensive period of time in order to make the most possible use of community input and intentional thought. It is intended to adhere to the guidelines set forth by the Michigan Department of Natural Resources for recreation plans.

### Steps to the Plan

The 2018 Recreation Plan was developed through the following steps.

- 1) Meeting of the Park Committee to discuss the initial draft of the Recreation Plan— [Park Committee Meeting February 7, 2017](#)
- 2) Community Input Survey—[February 24, 2017 through March 31, 2017](#)
- 3) Drafting of Recreation Plan document—[March through September 2017](#)
- 4) Review of Community Input Survey Results—[May 2, 2017](#)
- 5) Brainstorming of goals, objectives, and ideas to be included in the plan by Park Committee members—[May 2, 2017 through June 6, 2017](#)
- 6) Individual review of the plan document by Park Committee Members—[May 2, 2017 through August 1, 2017](#)
- 7) Plan Review and Approval by Park Committee to begin 30 day public comment period—[Park Committee Meeting September 5, 2017](#)
- 8) Constructing Goals and Objectives—[Park Committee Meeting September 5, 2017 & Work Session October 3, 2017](#)
- 9) Public Comment Meeting—[November 1, 2017](#)
- 10) Resolution of Adoption and Formal Recommendation of Approval by Park Committee—[November 1, 2017](#)
- 11) Approval of the *2018 Tittabawassee Township Recreation Plan* by the Tittabawassee Township Board of Trustees—[November 7, 2017](#)

## PUBLIC INPUT

### 2017 Community Input Survey Results

From February 24, 2017 through March 31, 2017 the Township administered an online community input survey. This survey was designed to supplement this recreation plan and in addition the 2018 Tittabawassee Township Master Plan. Of the 41 questions in the survey, 11 addressed recreation within the Township.

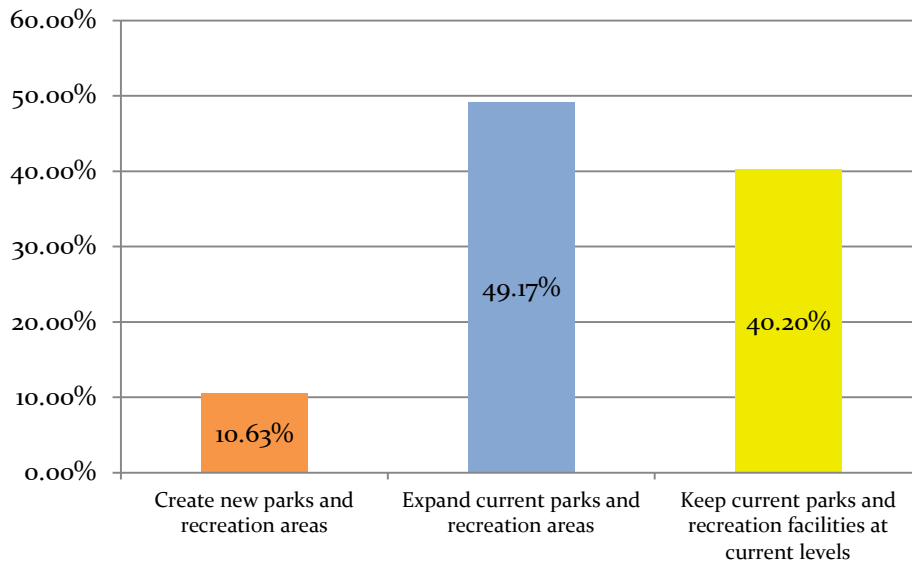
Each of the 11 questions are detailed on the following page. Along with the questions are the response results.

<b>11 Survey Questions</b> Inquiring about recreation within Tittabawassee Township	36 Days
	308 Responses

*Question numbers in parentheses correspond to the question number in the complete 41-question Community Input Survey.*

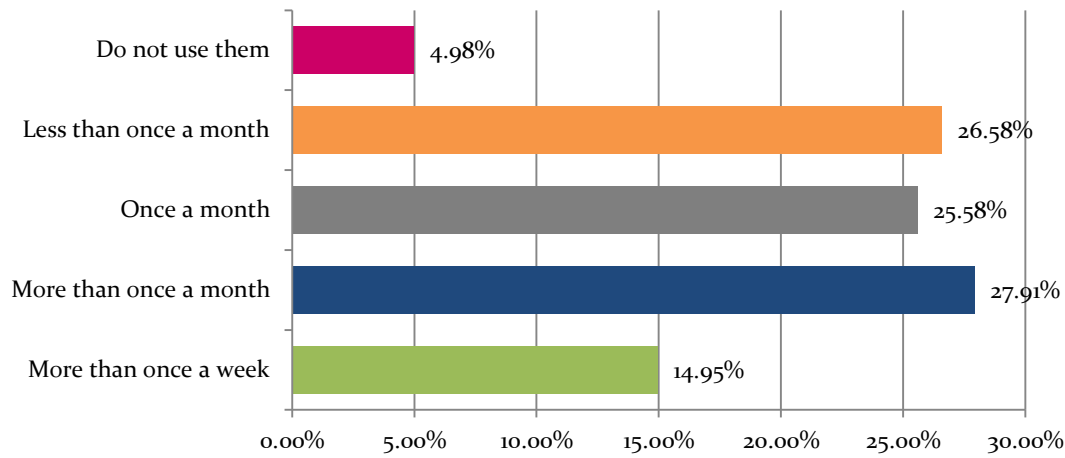
#### Question 1 (9)

Do you think more park and recreational areas should be created, current ones should be expanded, or current facilities should be kept the same at this time?



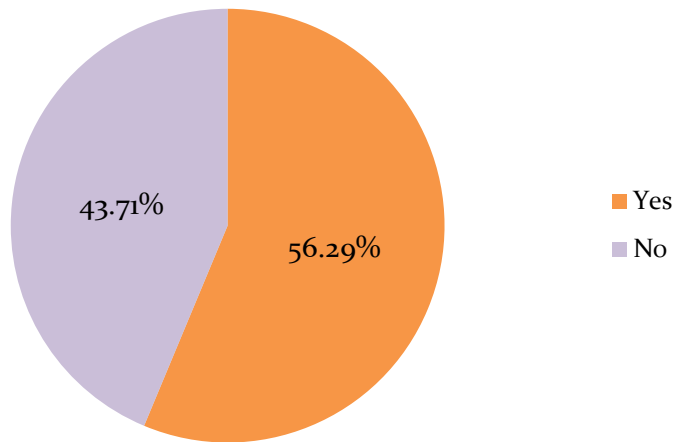
**Question 2 (10)**

How often do you use the parks and recreation facilities in the Township?



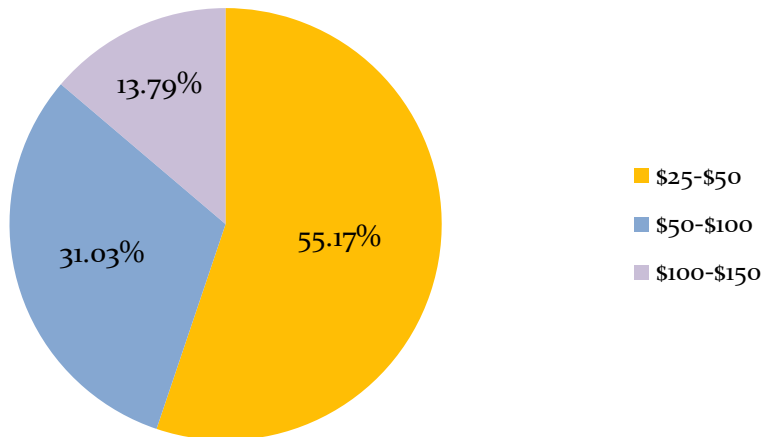
**Question 3 (13)**

Would you pay an additional property tax specifically used to increase parks and recreation operations and facilities in the Township?



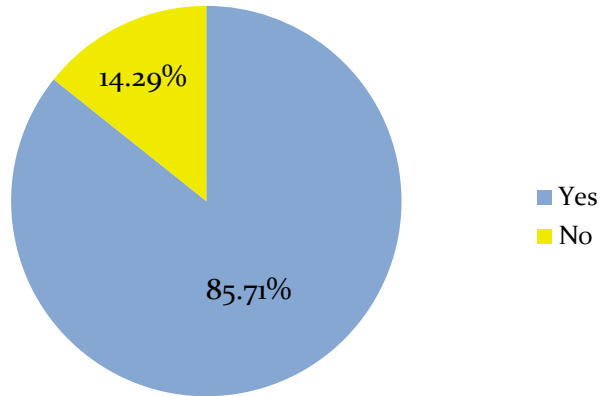
**Question 4 (14)**

If your answer to the previous question was "yes", how much more would you be willing to pay per year?



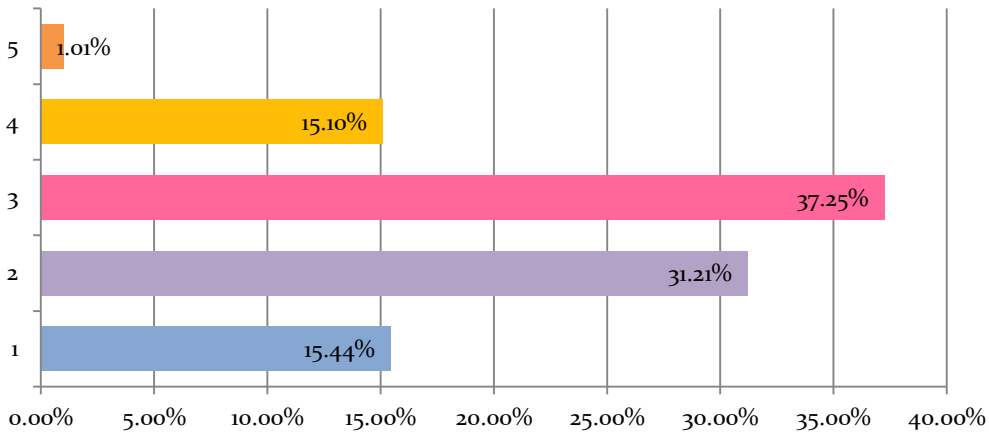
**Question 5 (12)**

Do you think a pathway or trail way system would be a good investment for the Township's future?



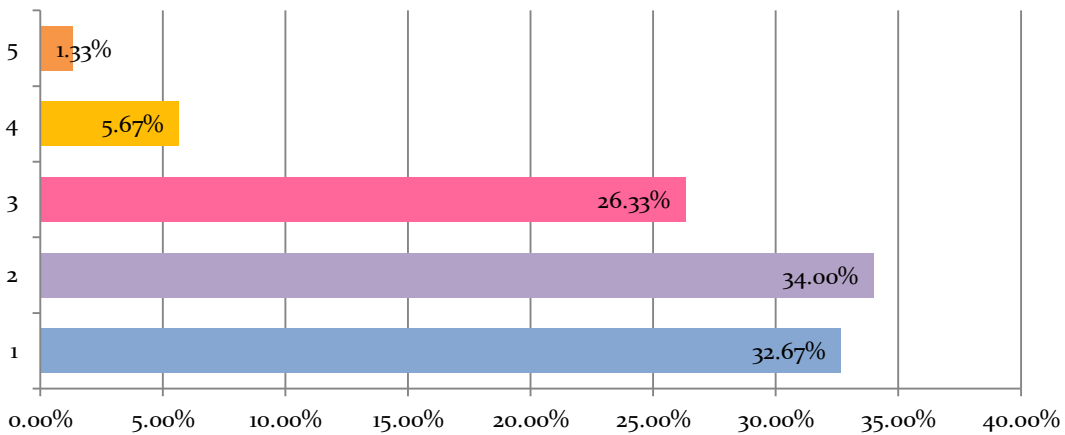
**Question 6(18)**

How would you rate the condition and extent of sidewalks in the township? 1-poor to 5-excellent



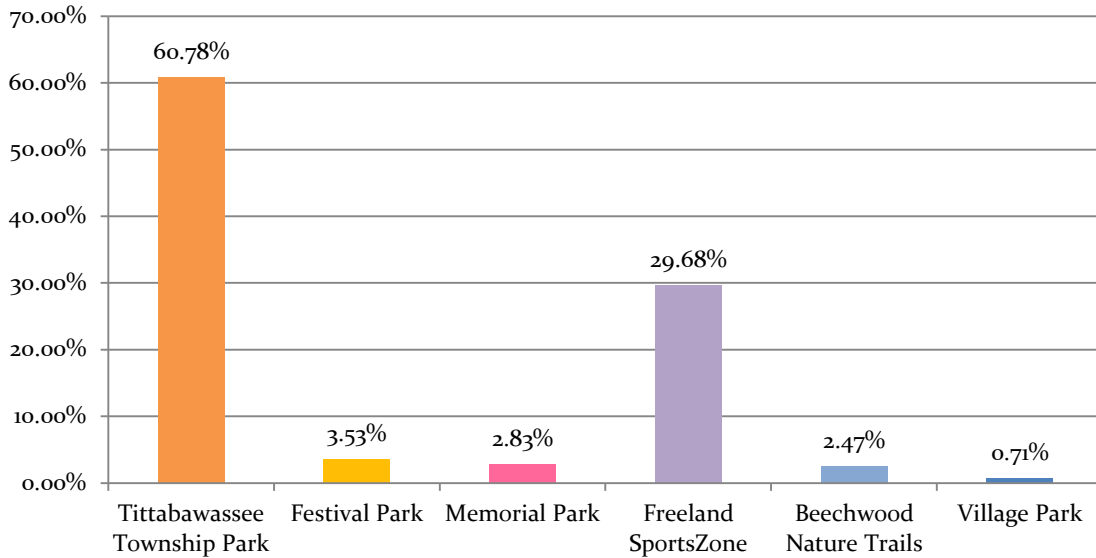
**Question 7 (17)**

How would you rate the pedestrian and bicycle accessibility to places in the township? 1-poor to 5-excellent



**Question 8 (11)**

Do you have a park that is your favorite? If so, which one?



**Question 9 (33)**

Please rank, according to importance, the areas you believe are in need of improvement. (Numbers closer to one are more important)

- Average rating for sidewalks is 4.62.
- Park/Recreation facilities had an average rating of 4.85.
- River access was not as important to the community as it had an average of 5.62.

**Question 10 (32)**

Please rank the new developments that are important to you (Numbers closest to one are more important)

- Improvement of Township Roads was the number one response with an average rating of 4.38.
- Sidewalks had an average of 4.81.
- Non-motorized pathways had an average of 4.84.
- Bark park was the least voted on and had an average of 6.44.

**Question 11 (36)**

Why have you chosen to live in Tittabawassee Township?

- Of those polled only 7.37% said they live in the Township because of the good park system.
- 11.58% of those polled said that they live in the Township because of the Freeland SportsZone.



## SUMMARY OF PROJECTS AND OBJECTIVES

As noted in the Introduction, the 2018 Tittabawassee Township Recreation Plan puts forth an implementation strategy for accomplishing the goals, projects and objectives identified by community input and committee brainstorming.

This section highlights objectives and projects for each park and the pathway system. Each objective or project has a subsequent implementation strategy, priority rank, and identified funding sources. Each park and the pathway system have a separate scale in which the objectives and projects are ranked. The top ranked project or objective has been identified as such and its completion will be of the most importance. This rank was determined by careful and intentional consideration of the community's desires and future desires of the Park Committee. The community's desires were weighted the highest during this consideration.

Tittabawassee Township Park			
Projects & Objectives	Implementation Strategy	Priority (Rank)	Funding Sources
Increase group, team, and other organized recreational opportunities (including softball league)	<ul style="list-style-type: none"> <li>-Continue partnership with professional Freeland SportsZone staff to coordinate activities</li> <li>-Continue to develop the partnership and frequently assess where opportunities could be added</li> </ul>	1	Self-funded through playing fees

## Memorial Park

Projects	Implementation Strategy	Priority (Rank)	Funding Sources
Make the kitchen area more secure	-Purchase materials and volunteer installation time from Park Committee Members and Park Rangers	1	Park Fund
Update Playground Equipment	-Seek grants/contributions for updated equipment	2	Grants/Township Funds
Enhancing rentals	-Review total number of rentals  -Review the rental agreement to assess what can be improved	3	None Required

## Festival Park

Projects & Objectives	Implementation Strategy	Priority (Rank)	Funding Sources
Continued improvement to the riverfront and river access	-Repair damage on current deck  -Extension of current walkway with proposed pathway system	1	Township General Fund, general grants
Add a kayak launch for better and safer access to the river	-Purchase and install kayak launch to meet new and increasing demand	2	Grants
Cut down and trim diseased trees by the road and riverfront	-Receive estimates  -Budget planning	3	Township General Fund

## Village Park

Projects	Implementation Strategy	Priority (Rank)	Funding Sources
Spray bricks to keep weeds from growing	-Develop a seasonal program for Park Rangers	1	Park Fund
Sign with park name	-Design and purchase one with the consistent Township park sign design	2	Township General Fund

## Beechwood Nature Trails

Projects & Objectives	Implementation Strategy	Priority (Rank)	Funding Sources
Stay with original intent of keeping the park rustic and natural	-Continue this as a policy of the Township and Park Committee	1	None required
Link nature trails to proposed river pathway	-Follow the pathway development plan	2	Regional and state grants

## Freeland Pathway

Projects	Implementation Strategy	Priority (Rank)	Funding Sources
Freeland/Kochville Path	-Design and submit for grant and matching funds to connect pathway with Kochville Township	1	State grants, foundation match, Township and DDA match
Freeland River Path	-Design and submit for grant and matching funds to connect pathway with Midland, MI.	2	State grants, foundation match, Township and DDA match

## Additional Parkland & General Recreation

Projects & Objectives	Implementation Strategy	Priority (Rank)	Funding Sources
Improve lighting at all parks	-Development of a plan on lighting types	1	Township General Fund
Coordinate efforts with the Township and the SportsZone	-Continue substantive Park Committee reports to the Township Board -Continue communication with SportsZone director	2	None required

## Pathway & Pedestrian System

The following projects and objectives are outlined for the pathway and pedestrian systems in the Township. It has been identified as a priority of both the community and the Township to develop a pathway system.

In 2017, the Township added the Freeland Pathway. This pathway was constructed by the Michigan Department of Transportation and is for non-motorized use only. The path begins at the Freeland SportsZone and makes its way along M-47 for 2.5 miles to connect the Township’s downtown residential area with the Freeland SportsZone. This trail is accompanied by a trailhead that is located at the Freeland SportsZone and includes concessions, picnic tables, bathrooms, and a drinking fountain.

In the region, the Great Lakes Bay Regional Trail Committee is the entity which guides most of the pathway development surrounding Tittabawassee Township. The following pages identifies in detail the location, statistics, development outline, and long-term potential of the proposed pathway in the Township. It is important to note that the proposed pathway is located in a portion of the long-term plan of the Great Lakes Bay Regional Trail System.

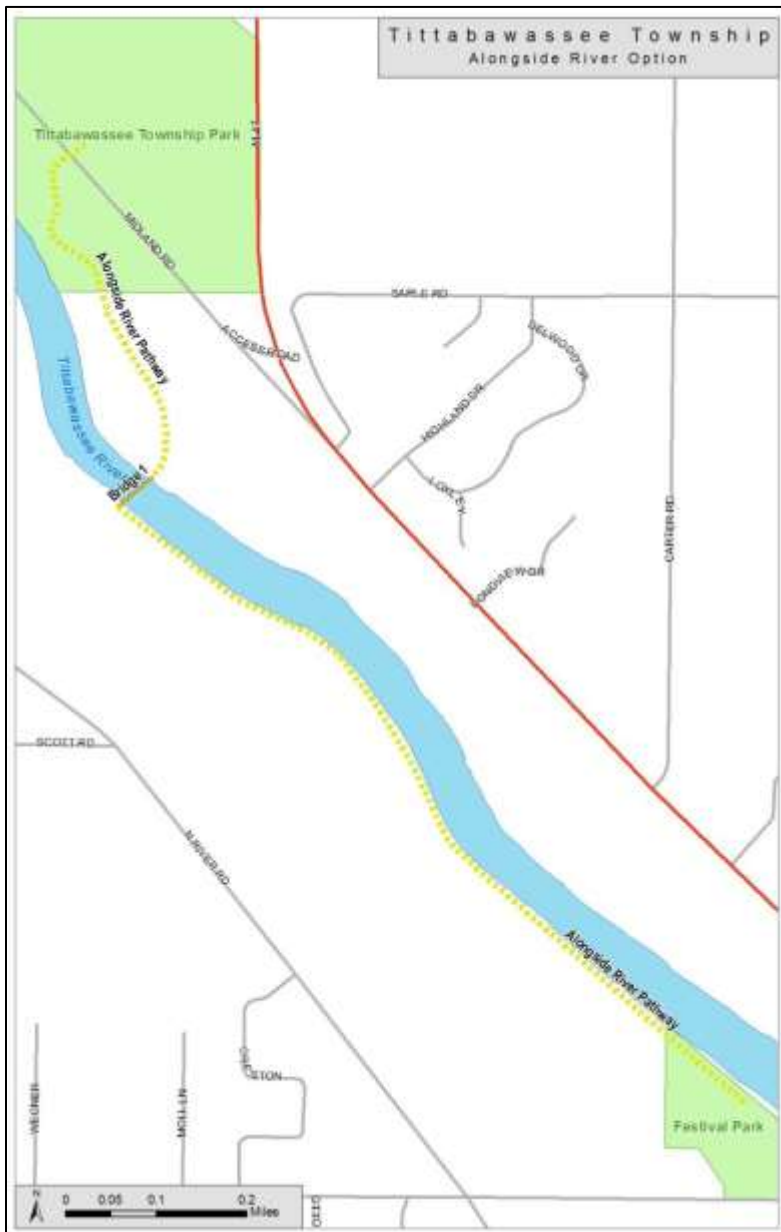
Projects & Objectives	Implementation Strategy	Priority (Rank)	Funding Sources
Continue to develop with adjacent townships	-Focus on partnership with the Great Lakes Bay Regional Trail Committee	1	None required
	-Pursue grant application for land acquisition and development		Regional and state grants
Alongside River Pathway	-Continue the development in phases	2	Township General Fund, regional and state grants
Sidewalk Improvements	-Plan to link neighborhoods, parks, and schools	3	Township General Fund
	-Collaborate with the Township Board		



## PATHWAY SYSTEM PLAN DETAIL

Since the early 2000s, Tittabawassee Township has identified the creation of a pathway, or shared-use path intended for non-motorized recreation, as a development priority. The identified priority of this pathway project is to connect the current Township parks.

2012 began again with a pathway included in the project priorities of the Parks Committee for the calendar year. This process began with the identification of five potential options. After the conduction of a feasibility study, it was concluded that the best option was located on the west bank of the Tittabawassee River. This option connects Festival Park to Tittabawassee Township Park (see map below).



### PATHWAY STATS

*Total Length:* 1.3 miles

*Trail Width:* 8'-12'

*Trailheads:*

SOUTH-  
Festival Park

NORTH-  
Tittabawassee Township Park

*Location & Topography:*

The pathway will sit on top of west bank of the Tittabawassee River. This bank is naturally raised relative to the streambed to the east and the floodplain to the west. Seasonal, secondary channels, accessing the floodplain, periodically cut through the west bank. The west bank is heavily vegetated with deciduous trees and shrubs.

The location of Bridge 1 will be at one of the narrowest point in this section of the river. At the location depicted on the map the width is approx. 260'.

The eastside of the river is also heavily vegetated. The east bank is raised and no floodplain exists behind it.

*Connecting to the Regional System:*

The location of this pathway is part of the Great Lakes Bay Regional Trail system's long-term plan.

## PHASE DEVELOPMENT

This project is planned to be completed in phases.

The first phase was deciding on the location of the pathway. This step has already been completed.

Phase two will consist of land acquisition of the pathway corridor. The corridor will need to be approximately 50' from river bank inland. The section south of Bridge 1 begins in Festival Park then runs through privately owned properties along the riverside. The land use of the proposed corridor is deciduous forest with a zoning of Greenbelt/Conservation.

Phase three is the construction of the south section (from Festival Park to Bridge 1).

The time of the remaining two phases, Bridge 1 and the north section, will be determined as the project continues. The construction of Bridge 1 will be dependent on future funding.

- 1 Location Determination & Planning
- 2 Land Acquisition
- 3 South Section Construction (Festival Park to Bridge 1)
- > North Section Construction (Tittabawassee Township Park to Bridge 1)
- > Bridge 1

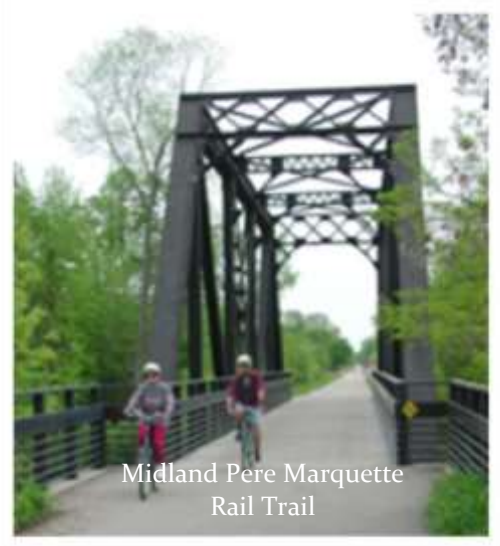
**\*Pictures below are examples in consideration of a pedestrian bridge over the Tittabawassee River\***



Saginaw Valley Rail Trail



Bay City Riverwalk Pier



Midland Pere Marquette Rail Trail

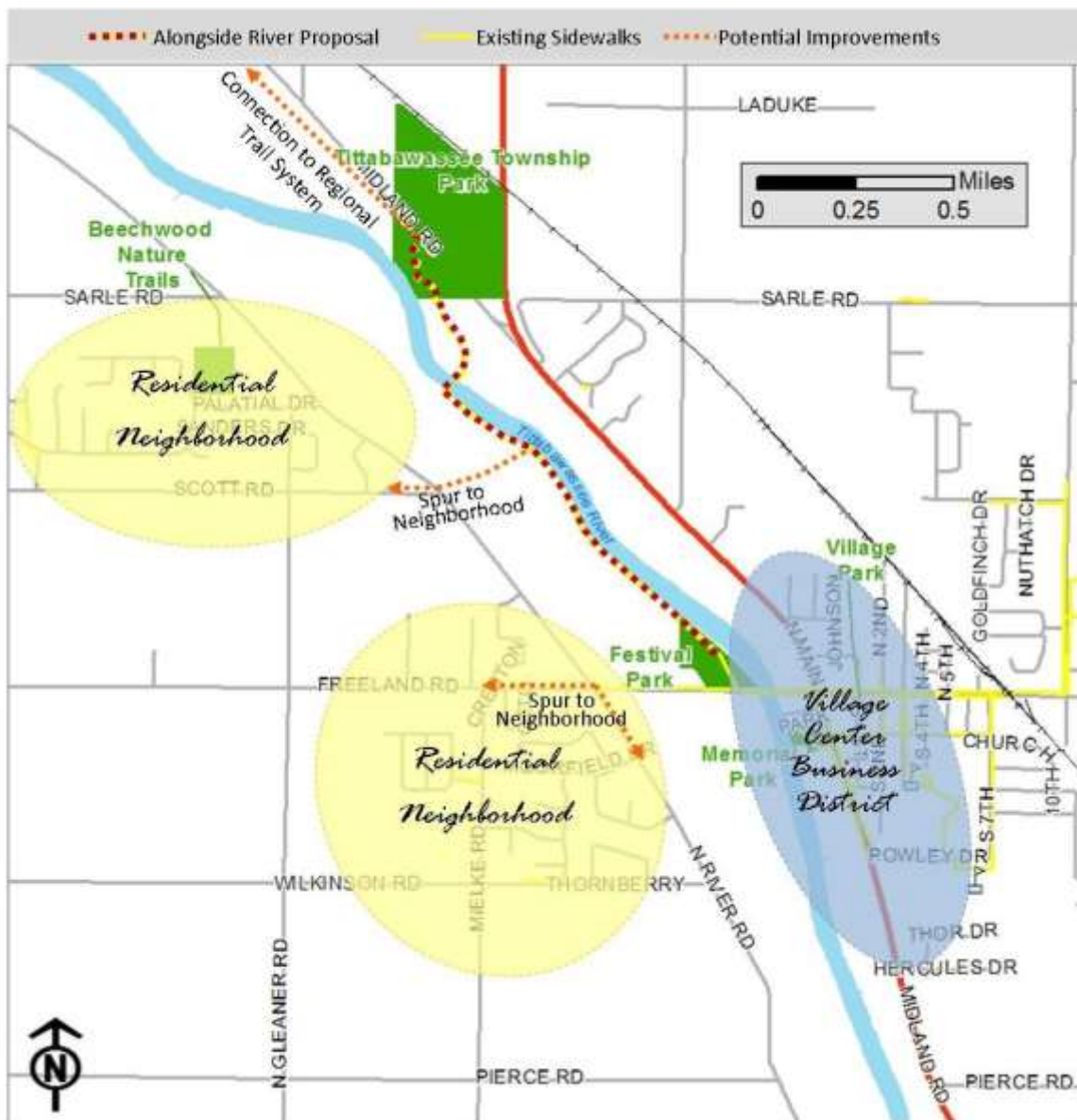


Bridge across the Duwamish River near Seattle, WA

## LONG-TERM POTENTIAL

Once the pathway alongside the Tittabawassee River is complete the potential for additional development is immense. From Tittabawassee Township Park heading toward the northwest a future connection could be made to the Midland County trail system, which includes the Pere Marquette Rail Trail. On the west side of the river, multiple spurs could be made to access the two main residential neighborhoods. To the southeast of Festival Park lies the Village Center Business District. Pedestrian access currently does exist from the park to this business center; however, improvements could be made to increase this portals attractiveness to users including way-finding signage.

The map below illustrates the long-term potential developments which could be added to enhance the pathway system in the Township.



# APPENDIX A

## PUBLIC INPUT PROCESS

### Notice of the Availability of the Draft Plan for Public Review and Comment

*PUBLIC NOTICE*

The following notice was posted at the regular Township posting locations including the front doors of the Township Offices and at public/community boards located in the Township.

September 21, 2017

Notice is hereby given that the draft of the 2018 Tittabawassee Township Recreation Plan is available for public review and comment. A copy of the Plan may be reviewed in the Township Office during the Township's normal operating hours, Monday through Friday 7:30 a.m. to 4:30 p.m.

Robert DuCharme  
Township Clerk

*DESCRIPTION OF METHODS*

**Online**

In addition to the previous notice of availability posting, the Township also advertised the availability of the draft plan for public review and comment on the Township's Facebook® page. This notice was posted on September 21, 2017.



**Newspaper Advertisement**

The notice of availability was also published in the local newspaper, *THE TOWNSHIP VIEW*. This advertisement was included in the weekly publication on September 21, 2017. A copy of the affidavit of publication is included at the end of this appendix.



## Notice of the Public Comment Meeting

### PUBLIC NOTICE

**NOTICE OF PUBLIC HEARING**  
**TOWNSHIP OF TITTABAWASSEE, SAGINAW COUNTY, MICHIGAN**

September 28, 2017

Notice is hereby given that a public hearing to allow residents of the Township to comment on the proposed 2018 Recreation Plan on November 1st, 2017 at 5:30 p.m. This Parks Plan is to be a guide for any new development in the parks areas of the Township for the next 5 years. This meeting will be held at the Township Office, 145 South Second Street, Freeland. A copy of the plan is available for review ahead of time in the Township Office during the Township's normal operating hours, Monday through Friday 7:30 a.m. to 4:30 p.m.

Tittabawassee Township will provide necessary reasonable auxiliary aids and services to any individuals with disabilities who plan to attend this public meeting. Persons interested in such services need to contact the Tittabawassee Township Clerk's Office at 145 S. Second Street, P.O. Box 158, Freeland, Michigan 48623 (989) 695-9512 at least four (4) working days prior to the meeting.

Robert DuCharme  
 Township Clerk

### DESCRIPTION OF METHODS

#### Online

In addition to the previous notice of the Public Hearing the Township also advertised the Public Hearing on the Township's Facebook® page. This notice was posted on September 28, 2017.



#### Newspaper Advertisement

The notice of availability was published in the local newspaper, *THE TOWNSHIP TIMES*. This advertisement was included in the weekly publication on September 28, 2017. A copy of the affidavit of publication is included at the end of this appendix.

## Minutes from Public Comment Meeting—November 1, 2017

Please see attachment.

## Plan Adoption Documentation

Please see separate packet.

**Public Comments on 2017 Recreation Plan**

**Wednesday, November 01, 2017**

No comments were made by those in attendance.

R-17-

**TITTABA W ASSEE TOWNSHIP  
SAGINAW COUNTY**

**RESOLUTION  
2018 RECREATION PLAN APPROVAL**

Minutes of a meeting of the Tittabawassee Township Board, County of Saginaw, State of Michigan, held at the Township Administrative Office in said Township on the 7th day of November, 2017, at 5:30 p.m., Michigan Time.

PRESENT:

ABSENT:

The following preamble and resolution were offered by \_\_\_\_\_ and supported by \_\_\_\_\_:

WHEREAS, the Tittabawassee Township Park Committee has undertaken a planning process to determine the recreation and natural resource conservation needs and desires of its residents during a five year period covering the years 2018 through 2022, and

WHEREAS, the Tittabawassee Township Park Committee began the process of developing a community recreation and natural resource conservation plan in accordance with the most recent guidelines developed by the Department of Natural Resources and made available to local communities, and

WHEREAS, residents of Tittabawassee Township were provided with a well-advertised opportunity during the development of the draft plan to express opinions, ask questions, and discuss all aspects of the recreation and natural resource conservation plan, and

WHEREAS, the public was given a well-advertised opportunity and reasonable accommodations to review the final draft for a period of at least 30 days

WHEREAS, a public hearing was held on November 1, 2017 at Tittabawassee Township Administrative Office to provide an opportunity for all residents of the planning area to express opinions, ask questions, and discuss all aspects of the Tittabawassee Township Recreation Plan

WHEREAS, the Tittabawassee Township Park Committee has developed the plan as a guideline for improving recreation and enhancing natural resource conservation for the Tittabawassee Township Board of Trustees, and

WHEREAS, after the public hearing, the Tittabawassee Township Park Committee voted to adopt said Tittabawassee Township Recreation Plan

NOW, THEREFORE BE IT RESOLVED the Tittabawassee Township Board of Trustees hereby adopts the Tittabawassee Township Recreation Plan

Yeas:

Nays:

Absent:

I, Robert DuCharme, Township Clerk, do hereby certify that the foregoing is a true and original copy of a resolution adopted by the Tittabawasee Township Board of Trustees at a Regular Meeting thereof held on the 7<sup>th</sup> day of N. 2017.

---

Robert DuCharme, Township Clerk

RESOLUTION DECLARED ADOPTED.